

# **Basic Training**

*With The Tri-Tronics*

*Electronic Collar*

## CONGRATULATIONS!

Your Tri-Tronics Remote Trainer will make it easier for your dog to learn, and easier for you to train your dog. With the aid of this training manual and our Basic Training video, which also accompanies your new Remote Trainer, your dog can learn with tail-wagging enthusiasm those useful obedience commands. "Come," "Sit," "Heel," and "Down." In addition, your dog can learn to avoid nasty habits like chasing, destructive chewing, and jumping up. Teach your canine best friend to become the good citizen he can be, as you set the foundation for more advanced field or competition training. If you have any questions or would like more training information, we're here to help. You can reach us at **1 (800) 456-4343**.

T R I T R O N I C S  
**Table Of Contents**

**TABLE OF CONTENTS**

**INTRODUCTION**

TWO WAYS TO USE REMOTE TRAINERS . . . . . 1  
KEEPING THE DOG FROM BECOMING COLLAR-WISE . . . . . 1  
DO NOT LEAVE A TRI-TRONICS COLLAR ON A DOG  
ALL THE TIME. . . . . 3  
INTENSITY SELECTION TIPS . . . . . 3

**STOPPING MISBEHAVIORS**

GENERAL POINTERS FOR STOPPING MISBEHAVIORS . . . . . 6  
JUMPING UP. . . . . 7  
DIGGING . . . . . 8  
CHASING . . . . . 9  
DESTRUCTIVE CHEWING . . . . . 12  
JUMPING ON FURNITURE. . . . . 14  
EATING WHAT'S NOT ALLOWED . . . . . 15  
CONTROLLING BARKING . . . . . 16  
AGGRESSION. . . . . 18

**OBEDIENCE PROGRAM**

WHAT TRAINING PROGRAM SHOULD YOU USE?. . . . . 19  
HOW DOGS LEARN. . . . . 19  
THE "COME" COMMAND WITH THE REMOTE TRAINER. . 22  
THE "SIT" COMMAND WITH THE REMOTE TRAINER . . . 25  
THE "HEEL" COMMAND WITH THE REMOTE TRAINER. . . 29  
THE "DOWN" COMMAND WITH THE REMOTE TRAINER . 31

**USING THE NO-STIMULATION SIGNAL TONE FOR TRAINING . 34**

**MORE TRAINING INFORMATION . . . . . 36**

## INTRODUCTION

### **TWO WAYS TO USE REMOTE TRAINERS**

There are two ways to use your Remote Trainer in dog training. You can use it to reinforce commands, like “Come” or “Heel,” and you can use it to stop misbehaviors, like digging and jumping up. This booklet will give you some instruction in both types of training.

If you plan to use your Remote Trainer to reinforce more than one command (for example, both the “Come” and “Sit” commands), an introductory program like the one on pages 19-33 of this booklet can be helpful.

Just because a dog understands a command does not mean that he automatically understands a correction from a Remote Trainer. A step-by-step introduction to the Remote Trainer can help him relate his own failure to obey with the correction he receives, and can keep him from becoming confused.

### **KEEPING THE DOG FROM BECOMING COLLAR-WISE**

A collar-wise dog believes that not wearing the collar is a cue that he is free to disobey commands. If your dog becomes collar-wise, the collar will be less useful in your training program than it otherwise would be.

### **Here are some tips to help keep your dog from becoming collar-wise**

When you are training commands, don't work the dog without the collar too soon. All dogs have their moments of forgetfulness after they seem to have learned a lesson. Be prepared to remind a “forgetful” dog. You can make a dog collar-wise if you work him without the collar before his obedience has become a habit in many different locations.

Don't make the training mistake of removing the collar in the middle of a session to “see if the dog will still do it without the collar.” If you put the collar on or take it off in the middle of a training session, you will tend to make your dog collar-wise because you'll give him an opportunity to compare results.

A good rule of thumb is to have the collar on the dog during training for 30 days after the last time you had to press a button. Also, you should plan on having the collar on the dog during training for 30 days after you have reintroduced the collar to help with a particular problem. Remember that these rules apply in every situation in which you might need to reinforce a command with the collar, not just in formal training sessions.

### **If you are using the collar for problem behaviors...**

A dog can also become collar-wise if you are using the collar to stop problem behaviors. Here are some tips to prevent your dog from becoming collar-wise in this situation.

1. Have the dog get used to wearing the collar and to seeing you handle the transmitter a few days before you correct the dog for the first time.
2. Always put the collar on the dog at least 30 minutes before correcting the dog with it. Don't use the collar right after putting it on the dog or he will associate having it put on with the corrections he receives.
3. Place the collar on the dog at various times without using it, so that having it put on his neck won't have any special significance to him. You want the dog to be unaware that wearing the collar is related to the corrections he receives.

Remember that dogs are very sensitive and will pick up on minor things about your behavior. So when you put the collar on the dog at random times, use the same tone of voice and mannerisms if possible. Also, dogs can become transmitter-wise just as they can become collar-wise, so sometimes carry and handle the transmitter in the dog's presence without using it.

Some dogs who have been confused by collar corrections in the past can learn to feel inhibited simply by wearing a collar. They can become reluctant to leave their owner's side any time the collar is worn, even though they're never corrected. To make sure your dog doesn't feel this way about wearing the collar, use correct procedures for introducing it in training, such as those in the obedience program on pages 19-33.

**DO NOT LEAVE A TRI-TRONICS COLLAR ON A DOG ALL THE TIME**

The collar should not be left on the dog for more than ten hours at a time. Leaving a Tri-Tronics collar on a dog continuously can cause skin irritation (from rubbing). Inspect your dog's neck regularly; some dog's skin is more sensitive than other dog's, and more prone to become irritated. If irritation develops, leave the collar off the dog until the condition has cleared up. Consult your Owner's Manual for additional information.

**INTENSITY SELECTION TIPS**

The correct intensity for training is normally one that will motivate the dog, but not overwhelm him. Dogs are like people in that they all have individual sensitivity levels. A dog's sensitivity level does not depend on his size, age or breed. So it's wise to test your dog to find the correct intensity level before you start training.

**IMPORTANT:** For best results when finding your dog's sensitivity, use continuous stimulation. If your transmitter has more than one button for continuous stimulation, use the button for the lowest level when finding your dog's sensitivity.

**NOTE:** If your dog overreacts (vocalizes or acts "rattled") when you use the lowest level of continuous stimulation that's available on your collar model, then retest for sensitivity starting with the lowest level of momentary stimulation if available on your model.

**Finding the lowest intensity in your collar model**

To perform the sensitivity test, you should start with the lowest level of intensity and work up. How you achieve the “lowest level of intensity” depends on your collar model. Adjusting intensity generally includes two types of adjustment. First, there is an adjustment to the basic intensity of the collar, using variable contact points, plugs, or a rotary dial or knob on the transmitter, depending on model. Second, there are “low, medium, and high” levels of this basic intensity, achieved with different transmitter buttons. If you aren’t sure of your model’s features, check your Owner’s Manual, or call our Customer Service Department at **1-800-456-4343**.

When you test your dog’s physical sensitivity to stimulation, he should not be distracted by anything and you should not give him any command when you press the button. If he is distracted or trying to obey a command, you won’t be able to accurately “read” his reactions to the mild stimulation.

**Test procedure**

After setting your collar intensity at its lowest possible level, wait until your dog is not paying attention to you or to anything else. Then press the lowest possible continuous stimulation button. Watch the dog’s expression. You want to see him cock his ears, or quickly move his head. He may have a quizzical expression on his face. This tells you that the dog has felt the stimulation but is not overwhelmed by it. If you see no reaction at all in the dog, increase the intensity by one level and repeat the test. Work your way up through the different intensities until you find the one that makes your dog react as described. If your dog overreacts (vocalizes) when you press the button, or starts to act worried, you have selected a position that’s probably too high for introductory training.

**When to increase or decrease intensity**

Note that different types of training call for different levels of intensity.

You may wish to increase the intensity of stimulation during training if:

- (1) The dog is not responding to the corrections, particularly when he is distracted.
- (2) You use the momentary buttons instead of continuous for most of your training.
- (3) You are using the Remote Trainer to stop the dog when he is chasing something.

You may wish to decrease the intensity of stimulation during training if:

- (1) The dog appears to be becoming concerned or anxious when corrected.
- (2) You are correcting the dog when he is not very far away from you, especially when he is not distracted or excited.
- (3) The dog frequently overreacts (vocalizes) when he is corrected.



## STOPPING MISBEHAVIORS

### GENERAL POINTERS FOR STOPPING MISBEHAVIORS

Here are some pointers to keep in mind when you use a Remote Trainer to stop a dog's misbehaviors.

1. **Consistency and correct timing are the keys to success.** Press the button the moment the dog makes the mistake. You want him to think he caused the correction by taking a particular action, and he cannot learn this if your corrections are too late.
2. **Keep yourself “out of the picture” if you can.** You'd like the dog to think that he caused the correction by his own action. Therefore, it's best to say nothing as you correct him.
3. **Choosing continuous or momentary stimulation.** For most problem solving, momentary stimulation is the best choice, although continuous will also work. To stop a dog from chasing something and for controlling excessive barking, continuous stimulation is preferable.

**NOTE:** Are you training with a collar that only has momentary stimulation? If so, then use a series of “taps” of momentary whenever this booklet calls for continuous stimulation.

4. **Remember, some misbehaviors are easier to prevent than change.** Maybe there is a way to remove the temptation and solve the problem. For example, if the dog steals the garbage, it might be easier to put the garbage where the dog can't get into it.

- 5. General obedience training can help dogs with behavior problems.** Obedience training (“Heel,” “Sit,” “Down,” “Stay,” “Come,” etc.) teaches your dog to respect you more. It teaches you how to communicate with your dog more effectively.

Also, many problem behaviors can often be traced to the dog having too much energy and no outlet for it. Regular obedience training sessions for just 20 minutes a day will give your dog a job to do and a chance to wear off excess energy; he will become a much calmer and more welcome companion.

### **JUMPING UP**

Dogs jump up because it leads to something they like – attention. Jumping up can be hard to cure if people around the dog are inconsistent about when they’ll allow it. Correcting the dog for jumping up won’t cure the problem if some family members or guests reward the dog for jumping up by giving him the attention he likes.

Obedience training is very helpful for dogs that like to jump up. When the dog wants to jump up, have him “Sit” instead. Then you can reward him with praise and attention for sitting instead of jumping up.

### **Lesson Plan to Stop Jumping Up**

Set the intensity to the level you selected for your dog in the section, “Intensity selection tips” on page 3. Approach the dog and cause him to jump up. The instant the dog jumps up, press the stimulation button. You want the dog to associate the very beginning of the act of jumping up with the displeasure. Repeat this process every time the dog jumps up, until he stops trying. Repeat this lesson with other people in different places. Make sure the dog has no opportunities to jump up without a correction until he has gone for three days without trying to jump up, even though he has had the chance.

If after several corrections the dog does not seem at all discouraged from jumping up, raise the intensity by one level. Be careful not to increase the intensity too much or too quickly because using too strong an intensity for jumping up could cause the dog to be afraid of the person he jumps on. You can use this same method to stop a dog from jumping up on barriers like fences, patio doors, and screen doors.

### **Jumping up – summary of steps**

- Use a pre-selected level of intensity.
- Approach the dog and cause him to jump up.
- Press the stimulation button the instant the dog jumps up. Good timing is important.
- Raise the intensity by one level if the dog is not responsive after several corrections.
- Repeat in several places with different people.
- Don't give the dog a chance to jump up without correcting him until he has gone for three days without trying to jump up.
- Use this same method to stop the dog from jumping on barriers.

### **DIGGING**

Curing this problem is a challenge because dogs usually dig when they're bored and no one's around. When you're home and paying attention to your dog, you may not see him digging.

### **Lesson Plan to Stop Digging**

Set the intensity to the level you selected for your dog in the section, "Intensity Selection Tips." Place the dog by himself in an area where he is likely to dig. Watch him, but don't let him know it. When he begins to dig, immediately press the stimulation button. If the dog does not respond to the

correction, raise the intensity by one level. To cure the digger, you must catch him in the beginning of the act every time he digs. Expect to spend several days watching your dog closely. These days do not need to be consecutive, but when you cannot watch him, do not leave him where he can dig.

Continue to observe the dog for three days while he's in a place where he has the chance to dig. If the dog has gone for three days after the most recent correction without trying to dig, you can usually consider this training complete. Be prepared to repeat it if digging starts again.

**Digging – summary of steps**

- Use a pre-selected level of intensity.
- Leave the dog in an area where he likes to dig, and watch him without his knowing.
- Press the stimulation button the moment he starts to dig.
- If the dog ignores the correction, raise the intensity by one level.
- Continue the training process until the dog has gone for three days without trying to dig.
- During the training period, do not give the dog a chance to dig if you cannot correct him.

**CHASING**

A dog won't chase something he consistently finds unpleasant. You can use the Remote Trainer very effectively to cause the dog to associate strong displeasure with chasing. However, this training will generally discourage him from chasing only the particular thing you corrected him for chasing. For example, if you have corrected him for chasing cars, this will not carry over and prevent him from chasing cats. You must correct him for chasing each thing you don't want him to chase. If your dog already has a habit of chasing, breaking it might be difficult.

You must be careful to correct every chase once you start your training. You might need to do this many times before the dog will believe that chasing is always unpleasant.

The instinct to chase is very strong in some dogs and they may eventually regress and start chasing again. More corrections with the Remote Trainer may be needed.

Dogs usually require a higher level of intensity to stop chasing than for other problem behaviors because they're so excited when they're in hot pursuit. Bear in mind that your dog will be surprised by the correction, and you won't know which way he'll go when he breaks off the chase. So chase training requires care. Don't plan your chase training in an area where your dog could be hit by a car or be in danger because of other hazards.

If your dog has already been trained to come on command with the Remote Trainer, he will tend to want to return to you when you use the collar to correct him for chasing. Therefore, we recommend that you first train the dog to "Come" with the Remote Trainer before you begin using it to stop chasing. (See pages 22-24.)

Pay special attention to using the collar to reinforce the "Come" command around very tempting distractions, especially those that encourage the dog to try to leave the training area. Give the dog plenty of opportunities to learn that turning back towards you "turns off" the collar stimulation.

Keep in mind that a chasing dog is traveling fast. It may take some time for the dog to come off the chase. Don't set up a situation that allows the dog time to catch what he is chasing before he notices the correction.

**Special Intensity Considerations for Stopping Chasing**

Select an intensity level that is one level higher than the one you selected for your dog in the section “Intensity selection tips.” (If you are stopping chasing inside the house, you may not need the higher level – just start with your dog’s pre-selected level of intensity.) Some dogs are too excited when they chase to feel the lower levels. If you find that the dog ignores the correction the first time you use it, increase the intensity level again. If your collar model allows you to change the intensity at the transmitter, immediately switch to a higher intensity if the dog appears to ignore the correction.

**Lesson Plan to Stop Chasing**

Set up a situation in which you know the dog will chase. As soon as he starts in pursuit, press the continuous stimulation button. Hold it down until the dog gives up his chase.

Remember that your continuous stimulation will “time out” (turn off automatically) after about 8 seconds (4 seconds with certain models – consult your Owner’s Manual about the time-out feature). If your dog has not broken off the chase after a few seconds, release the button for one second and then press it again so that the collar won’t time out. You should press and release the continuous button in this fashion until the dog gives up his chase.

### **Chasing – summary of steps**

- Train “Come” with the Remote Trainer before using it to stop chasing.
- Start with an intensity one level above your dog’s normal intensity level.
- Set up situations in safe areas that will cause the dog to chase; be ready to use the Remote Trainer as soon as a correction is needed.
- When the dog starts to chase, press and hold the continuous stimulation button until the dog stops chasing.
- If the dog doesn’t break off his chase after a few seconds, “pump” the continuous button.
- If the dog doesn’t respond to the correction, increase the intensity again.
- Repeat in several locations.
- During the training period, do not give the dog a chance to chase unless you can correct him with the Remote Trainer.

### **DESTRUCTIVE CHEWING**

Chewing is a natural and pleasurable activity for dogs. Before you begin training your dog not to chew things, give him some safe chew toys of his own. Encourage him to chew them, especially after correcting him for chewing the wrong things.

### **Lesson Plan to Stop Destructive Chewing**

Set the intensity to the level you selected for your dog in the section “Selecting the intensity.”

Leave the dog in an area where there are items he’d like to chew but shouldn’t. Watch him, preferably without his realizing it. If people are present in the area, they should ignore the dog before and after the correction. The moment the dog begins to

chew something he shouldn't, press the stimulation button. If the dog does not respond to the correction, increase the intensity by one level.

During this training period, do not give the dog any opportunities to chew the wrong things unless you can correct him with the Remote Trainer. When you are not watching, confine him to an area with only his approved chew toys.

Observe the dog for three days after his most recent correction for chewing. During this period, always be prepared to correct him if he tries to chew what he shouldn't. When the dog can go for three days without trying to chew the forbidden things, you can usually consider your training completed for this problem. Be prepared to repeat the training if chewing starts up again.

**Destructive chewing – summary of steps**

- Interest the dog in chew toys of his own before you begin correcting him for chewing the wrong things.
- Use a pre-selected intensity level.
- Leave the dog in an area with things he'd like to chew but shouldn't and watch him.
- As soon as the dog starts to chew, press the stimulation button.
- If the dog ignores the correction, increase the intensity by one level.
- Continue the training process until the dog has gone for three days without trying to chew things he shouldn't.
- During the training period, don't give the dog a chance to chew things he shouldn't unless you can correct him with the Remote Trainer.
- Encourage the dog to chew his toys after correcting him for chewing the wrong things.



### **JUMPING ON FURNITURE**

Follow the same procedure used to stop digging. The dog should be by himself in an area with “off limits” furniture.

### **Lesson Plan to Stop Jumping on Furniture**

Follow the procedure described to stop digging. The moment the dog starts to get up on the furniture, press the stimulation button.

If the dog does not respond to the correction, press and release the stimulation button several times. If he is still not responding after repetition, increase the intensity by one level.

#### **Jumping on furniture – summary of steps**

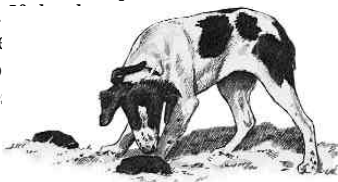
- Use a pre-selected intensity level.
- Leave the dog in an area with furniture he likes to climb on, and watch him without his knowing.
- Press the stimulation button the moment the dog starts to get up on the furniture. If he does not respond, press and release it several times.
- If the dog ignores the correction, increase the intensity by one level.
- Continue the training process until the dog has gone for three days without trying to get on the furniture.
- During the training period, do not give the dog a chance to get on the furniture unless you can correct him with the Remote Trainer.

### **EATING WHAT'S NOT ALLOWED**

The Remote Trainer can be used to stop a dog from eating things he shouldn't. Using a Remote Trainer makes it easy for the dog to learn not to steal food, raid the garbage, or eat animal droppings, because you can make these things unpleasant to the dog.

### **Lesson Plan to Stop Eating What's Not Allowed**

Follow the procedure described to stop digging. The moment the dog's mouth actually touches the temptation, press the stimulation button. If the dog does not respond to the correction, press and release the stimulation button several times. If he is still not responding after repetition, increase the intensity by one level.



#### **Eating what's not allowed – summary of steps**

- Use a pre-selected intensity level.
- Place the dog in an area with the appropriate temptation, and watch him.
- Press the stimulation button the instant his mouth actually touches the temptation. If he does not respond, press and release it several times.
- If the dog ignores the correction, increase the intensity by one level.
- Continue the training process until the dog has gone for three days without trying to go for the temptation.
- During the training period, do not give the dog a chance at the temptation unless you can correct him.

## CONTROLLING BARKING

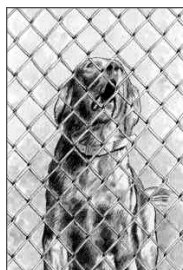
Barking is a strong instinctive behavior in dogs. Some dogs start barking almost without thinking, so it's not realistic to try to teach a dog never to bark. However, you can teach him to be quiet on command, or in certain situations.

You can use the Remote Trainer to limit barking by training the dog to stop barking when he hears the word "Quiet!" (or another command of your choice).

### Lesson Plan to Control Barking

Set the intensity to the level you selected for your dog in the section "Intensity selection tips."

Put the dog in a situation where you know he'll bark. When he begins to bark, give your command to be quiet in a stern voice and then press the continuous stimulation button. Release it a moment later.



Repeat this several times until the dog will stop barking when he hears the command to be quiet.

Repeat this procedure on different days. If possible, find various situations that cause the dog to bark. Sometimes do not give the command to be quiet; instead let the dog bark. In other words, don't correct every time the dog barks, but at this stage of training, always correct if you have given the command to be quiet.

If, by the end of your second training session, you find that the dog doesn't stop barking when you press the button, set the intensity to the next higher level. Repeat the procedure.

After a week of this training, don't press the button after the first time you give the command to stop barking. Instead, wait to see if the dog stops barking when he hears your command. Now, if he continues to bark after one such warning, repeat the command, and press the stimulation button.

**Tri-Tronics Bark Limiter<sup>XS</sup>**

A Tri-Tronics Bark Limiter<sup>XS</sup> is another way to control your dog's barking. It applies mild stimulation automatically when the dog barks, causing discomfort which he learns to associate with his own barking. The dog learns that he prevents this mild discomfort by not barking.



When the dog wears a Tri-Tronics Bark Limiter<sup>XS</sup>, you don't have to get personally involved in correcting the dog for barking. The dog causes his own correction by barking. This consistent pattern makes it easy for him to learn not to bark while he is wearing the Bark Limiter<sup>XS</sup>.

Some dogs should bark as a normal part of the work they do, such as hounds and protection dogs. For these dogs, it can be preferable to start no-bark training with a be-quiet command backed up with a Remote Trainer (as described on page 16), rather than with a Bark Limiter<sup>XS</sup>.

**Controlling barking – summary of steps.**

- Use a pre-selected intensity level.
- Put the dog in a situation which will cause him to bark.
- Say “Quiet!” and press the continuous stimulation button. Release it a moment later.
- Repeat this several times in the first session.
- Repeat this lesson for a week, finding different things to cause barking. Do not correct every barking episode.
- If the dog isn’t responding after two sessions, increase the intensity by one level.
- After a week of lessons, don’t press the button at all with the first “Quiet!” command. Press the button only if you must repeat the command.

**AGGRESSION**

Aggression in dogs has many causes. Social dominance, fearfulness, learned behavior, and physical problems, as well as other factors, can all be involved. In some cases, aggression can be successfully treated with a Remote Trainer, following the proper procedure. In other cases, however, correcting the aggressive dog with a Remote Trainer is not appropriate and will not be successful. Because the causes of aggression can be so varied and situations so unique, we recommend that you consult a knowledgeable professional dog trainer or animal behaviorist who has experience with aggressive dogs. We do not recommend that you use the Remote Trainer to treat your dog’s aggression without first getting professional training help.

## OBEDIENCE PROGRAM

This part of the training booklet covers training on obedience commands. We will cover the commands, “Come,” “Sit,” “Heel,” and “Down.” Using your Remote Trainer to solve behavior problems is in the earlier part of this booklet, on pages 6-18.

### **WHAT TRAINING PROGRAM SHOULD YOU USE?**

There are many ways to train a dog and many good training programs available. The program we include here is only one of many training methods that you can use to train your dog. By including specific features in the training program in this booklet, we don't mean to suggest that other training programs with different features are wrong.

### **HOW DOGS LEARN**

Here are some basic guidelines that cover all your Remote Trainer work on obedience commands.

**Follow a step-by-step introduction process on each command.** Don't assume that your dog will understand a Remote Trainer correction in connection with a command. The stimulus can confuse him initially, even if he knows the command.

**Don't introduce remote training with too high of an intensity level.** Use a level that is just high enough to cause your dog to respond to it after repetition. Do not introduce the collar at so high a level that your dog becomes worried or is vocalizing. The intensity level of Tri-Tronics Remote Trainers can be adjusted for a wide range of breeds and temperament types. The section, “INTENSITY SELECTION TIPS” on page 3 explains how to select a level for starting training.

**Don't introduce remote training around distractions.** Keep things simple for your dog in his first sessions. He can't learn well when there's too much going on.

**Use distractions later, to train your dog to be reliable.**

Using a command in “real world” situations before a dog has been taught to be reliable can have disappointing results, because the dog will act confused. Some planned distraction training is the “bridge” that many dogs need.

**When you add distractions, add them gradually.**

A confused dog can associate the stimulation with the distraction itself, instead of with his own failure to obey a command. Gradually increase training challenges in small steps so he can succeed. Avoid using distractions that scare a dog. Examples of how to use distractions are in the Tri-Tronics Basic Training video.

**You might need a higher level of intensity when reinforcing commands around distractions.**

This is normal for most dogs. After your dog has been properly introduced to the Remote Trainer, don't be afraid to increase the intensity somewhat to help your dog learn that he must obey your commands even when he's distracted. Don't “nag” an experienced dog with corrections he just shrugs off.

**Keep your dog in "behavioral balance."** Some commands call for the dog to move somewhere—like “Come” and “Heel.” Other commands call for him to remain stationary—like “Sit” and “Down.” A dog that has become good at obeying one type of command with the Remote Trainer will tend to offer the same behavior even when given the opposite type of command. He isn't “being bad” when doing this, he's actually trying hard. We recommend that you alternate command types. Teach a motion command over a few sessions, and then choose a stationary command to work on next. If you start with a stationary command, cover a motion one next.

**Keep your dog's lessons short, and break lessons down into small sub-tasks.** Dogs learn in very small steps, and they have short attention spans for formal training.

**Be sure your dog can be successful in training.** Dogs learn from their earlier successes. Sometimes you have to simplify things more than you thought you would before your dog can understand a lesson and be successful. Any time your dog seems confused, simplify! Back up and divide the lesson into smaller steps.

**Be consistent.** Be consistent in your procedures and in the standards you set for your dog's work.

**Repetition is necessary for your dog to learn.** He learns by association, and needs repetition to identify exactly what to associate with what.

**Concentrate on teaching your dog one thing at a time.** He can't make the associations he needs if the lessons are too complicated for him.

**Use praise to let your dog know when he's done the correct thing.**

**Be sure to have plenty of play time as part of the training session.** Use play within a training session to keep your dog enthusiastic. Both you and your dog should always look forward to training.





**Teach the Command First**

To get the best training results, first teach the command with a leash and check cord (a 20 to 30-foot rope, or “long line” as it’s sometimes called), before you start using a Remote Trainer. After your dog understands what you expect him to do, he is ready to learn that the Remote Trainer can also reinforce your command, instead of the leash or check cord, and he’ll learn quickly how to respond to the Remote Trainer. However, he doesn’t need to be letter perfect on the command when you introduce the Remote Trainer. In fact, it can be better if he isn’t.

This booklet will cover how to introduce your dog to the Remote Trainer after he knows basic commands. If your dog doesn’t already know any basic obedience commands, you’ll find suggested procedures for teaching the “Heel,” “Come,” “Sit” and “Down” commands with a leash and check cord in our training video, “Basic Training with the Tri-Tronics Electronic Collar.”

**THE “COME” COMMAND WITH THE REMOTE TRAINER**

To introduce the Remote Trainer for the “Come” command, combine the stimulus from the Remote Trainer with another form of correction the dog already understands, such as your tug with a check cord. When the dog has made this connection, stop using the check cord and use only the Remote Trainer.

Use the intensity level you’ve pre-selected for your dog (see page 3). Use continuous stimulation for the initial lessons. If your dog is very sensitive, you may prefer to use a series of taps of momentary stimulation instead (see page 6).

Find an area that is free of distractions like other dogs, livestock, children playing, family members, etc.

## **Procedure for Introducing The Remote Trainer With the "Come" Command**

1. Put your dog, wearing his Remote Trainer, on a 20-30 foot check cord. Let your dog wander around and relax.
2. Remind the dog one time about the check cord correction before you use the Remote Trainer. Call the dog and give a light pull on the check cord so that he turns and comes to you.
3. Let the dog wander off and relax again. Call the dog when he is looking away from you, and press the button of your Remote Trainer at the same time. Give a light pull on the check cord, causing the dog to turn toward you.
4. Release the stimulation the moment he turns and starts to come.
5. Praise him for turning and starting to come.
6. If he doesn't come all the way, press the button again as you call him again. Tug the check cord again.
7. Release the dog after he's come to you, and let him wander around and relax.
8. Repeat steps 3 – 7 a few times. Then end the session with some play time.
9. When you see the dog consistently responding just to the Remote Trainer stimulus by turning promptly and not needing the pull on the check cord, stop using the check cord. He no longer needs the guidance from it. You should see this behavior in your dog by at least the third session. Some dogs will respond even sooner.
10. Also at this time, you should stop using stimulation with the first command. From now on only use stimulation if the dog ignores your first command to come.

### **Add Distraction Training**

Now that your dog understands how to “turn off” the Remote Trainer by turning and coming toward you when you call, it is time to introduce distractions. Have sessions on “Come” in other training areas, and around gradually increasing levels of distraction. Follow the guidelines on training with distractions in the section, “How Dogs Learn,” on page 19.

When training “Come” around distractions, always give the dog one chance to respond to your command without pressing the button. Only use stimulation if the dog ignores the first command. Also be prepared to increase the intensity somewhat to overcome a distraction.

Always release the stimulation the moment the dog starts to come. If he doesn't come all the way or slows down and gets distracted, press the button again as you give another command to Come.

### **What If ...?**

**Your dog won't leave your side after some training on “Come”?** Do fewer repetitions in a training session, then end the session and play with the dog.

Have another session in a different location later. Space repetitions farther apart, and let the dog wander around quite a bit between repetitions in which you call him. Also, sometimes call the dog and do not press the button. This will keep him feeling more “freed-up.”

**Your dog ignores the stimulus, even after several sessions, and doesn't seem to make any progress.**

Increase the level of intensity until you find a level that better gets his attention. After the dog is responsive for several sessions, you may be able to go back down to a lower level.

If he ignores corrections when strongly distracted, temporarily work him on the check cord so you can keep him from “running through” a correction to visit an enticing distraction.

### **THE “SIT” COMMAND WITH THE REMOTE TRAINER**

Your dog should have already learned the “Sit” command before you introduce the Remote Trainer for reinforcing “Sit.” If your dog doesn’t already know the “Sit” command, a procedure for teaching it is included in our Basic Training video.

Use the intensity level you’ve pre-selected for your dog (see page 3). Use continuous stimulation for the initial lessons. If your dog is very sensitive, you may prefer to use a series of taps of momentary stimulation (see page 6).

For your initial training on “Sit” with the Remote Trainer, it’s best to start in a training area that is already familiar to your dog from having done other training there. This area should be free from distractions like other dogs, livestock, children playing, family members, etc.

### **Procedure for Introducing the Remote Trainer with the “Sit” Command**

1. With your dog on leash and at your side, walk forward a few steps and come to a stop, giving the “Sit” command. Doing this at the start of the session without the Remote Trainer reminds your dog about the “Sit” command.
2. Repeat step 1, but this time after you say “Sit,” press the continuous button of your Remote Trainer, then say “Sit” again.
3. Use upward pressure with the leash if you need to, to help the dog sit.
4. Release the stimulation the moment the dog sits, and praise him.
5. If he gets up before you release him, press the button again as you command “Sit.” Release the stimulation when he sits back down.
6. Release the dog from his sit after a few moments, and walk him to a new place in the training area.

7. Repeat steps 2 – 6 a few times. Then end the session with some play time.
8. When you see the dog anticipating the “Sit” command by watching to see when you’ll stop, maybe even dropping his rear as he walks (he is trying to “beat” the stimulation by being all ready to sit), he is ready to move on to distraction training. You should see this behavior in your dog by at least the third session. Some dogs will respond even sooner.

### **Add Distraction Training (the “Sit Stay”)**

Now that your dog understands how to “turn off” the Remote Trainer by sitting quickly on command, it is time to introduce distractions and expect him to stay sitting even when distracted. Train “Sit” in other training areas, and around gradually increasing levels of distraction. Having an assistant introduce mild distractions can be very helpful. During distraction training, correct the dog with the Remote Trainer if he responds to a distraction by standing up or moving away from where he was sitting.

### **Procedure for Distraction Training With the “Sit” Command**

1. Have the dog at your side, on a check cord, and give the Sit command without pressing the Remote Trainer button.
2. After the dog is sitting, introduce the mild distraction.
3. If the dog moves, press the Remote Trainer button as you give the “Sit” command.
4. Release the stimulation as the dog sits back down.
5. If the dog won’t sit back down, use your check cord and repeat your “sit” command to get him to sit.
6. Calmly praise the dog when you see him make the right choice and resist the temptation to move.
7. Gradually increase the level of distractions.

### **Remote “Sit” Training**

Now that your dog understands the Remote Trainer correction with the “Sit” command and has had distraction training, he is ready to learn to sit at a distance from you. This is called the “remote sit.” It is a very useful command, but it can be hard for some dogs to learn, because they want to come and be with you.

Note that your dog should already have been taught this skill without the Remote Trainer before you proceed with the lesson described below. If your dog hasn’t already had this lesson, a procedure for teaching it is included in our Basic Training video.

### **Procedure for Remote “Sit” Training after the Dog Has Been Taught the Remote Sit without the Remote Trainer**

1. Put your dog on a check cord and let him wander about 8 to 10 feet away from you.
2. Give the “Sit” command.
3. If the dog sits, praise him, then walk over to him and release him and start another repetition.
4. If he does not sit immediately, repeat the “Sit” command and give a quick tap with the stimulation button.
5. Do NOT let the dog take any steps toward you before he sits. Walk toward him and have him sit.
6. During initial sessions, always walk over to your dog to release him rather than calling him to you. Later, when he is more experienced at the remote sit, you can release him or call him to you from a distance.

### **What If ...?**

**When working on the basic “Sit” command, your dog seems confused.**

If he is having a hard time with the concept, go back and teach him better before adding the Remote Trainer.

**When working on the Remote “Sit” exercise, your dog won’t even try to sit anywhere but at your side.**

First of all, don’t say your dog’s name before giving the “Sit” command. Hearing his name tends to cause a dog to come to you. Second, put a second check cord on the dog. Have an assistant use it to keep the dog from coming toward you, while the check cord you hold keeps the dog from going to the assistant. This way, you and the assistant prevent the dog from running to a person when he’s told to sit. You help him learn that the collar doesn’t turn off until he sits in place. Once he understands this, he will stop trying to come to you when he hears the “Sit” command and will promptly sit wherever he is.

**When working on distraction training, your dog ignores the stimulus, and doesn’t seem to make any progress. Or he keeps “running through” the correction and visiting an enticing distraction.**

Use milder distractions until he becomes good at resisting them, and only then increase the distractions. Also, you can increase the level of intensity until you find a level that better gets his attention.

Remember that during your beginning distraction training on the “Sit” command, you should have your check cord on the dog until it’s clear that he understands how to respond to a Remote Trainer correction even when strongly tempted. The check cord keeps the dog from ignoring the Remote Trainer entirely, and getting rewarded by visiting an enticing distraction.

When the dog gets up in response to a distraction, remember to continue the stimulation until the dog sits back down. Stopping the stimulation tells him that his choice to sit was the correct one. An effective Remote Trainer correction teaches him that moving after being told to “Sit” is not what he wants to do.

## **THE “HEEL” COMMAND WITH THE REMOTE TRAINER**

Your dog should have already learned how to heel on leash before you introduce the Remote Trainer for reinforcing “Heel.” If your dog doesn’t already know how to heel, a procedure for teaching it is included in our Basic Training video.

To introduce the Remote Trainer for the “Heel” command, combine the stimulus from the Remote Trainer with gentle tugs on the leash, which is another form of correction the dog already understands. Use the intensity level you’ve pre-selected for your dog (see page 3). You will use a quick “tap-and-release” of continuous stimulation for the initial lessons, or you may prefer to use momentary stimulation (see page 6). Find an area that is free of distractions like other dogs, livestock, children playing, family members, etc.

### **Procedure for Introducing the Remote Trainer with the “Heel” Command**

1. Begin heeling the dog on leash, and correct him a few times when needed, using the leash only.
2. Continue heeling and now, when a correction is needed, correct with both the leash and the Remote Trainer simultaneously. Use a quick “tap-and-release” of the Remote Trainer button at the same time that you correct quickly with the leash.
3. As the next step, correct with the Remote Trainer alone, without using a leash correction, but correct only when the dog is four or more feet out of heel position. For smaller errors, correct only with the leash.
4. As the dog gains experience, you can correct with the Remote Trainer for the smaller errors, too.
5. Praise your dog enthusiastically for moving into heel position even when you have corrected him.



6. Have sessions on heeling in different areas, and gradually increase distractions. Follow the guidelines on training with distractions in the section "How Dogs Learn," on page 19.
7. When you see that the dog needs very few corrections, remove the leash and use only the Remote Trainer for corrections on "Heel." Now your dog can become really reliable at heeling off-leash.

### **What If ...?**

#### **Your dog is heeling too closely and is leaning on you?**

You can prevent this error of "trying too hard" if you use Remote Trainer corrections only when the dog is four or more feet from you, and use the leash only if his infraction is minor and he is less than four feet from you. As he becomes proficient, you can use the Remote Trainer for the more minor infractions, too. Making many left turns while heeling will also help the dog learn not to crowd you.

#### **Your dog ignores the stimulus and doesn't seem to make any progress.**

Increase the level of intensity until you find a level that better gets his attention. Use distractions to make training more challenging for the dog.

#### **Your dog isn't heeling accurately and the Remote Trainer corrections seem to confuse him.**

Teach him more about heeling with your leash, without the Remote Trainer. Then reintroduce the Remote Trainer when he knows how to heel better.

#### **Your dog seems bored and is lagging behind while heeling.**

Heeling can be monotonous for a dog. Keep your sessions short and upbeat and praise your dog for trying even when he isn't perfect. Build play sessions into your heeling sessions to keep a good attitude.

**THE “DOWN” COMMAND WITH THE REMOTE TRAINER**

Your dog should have already learned the “Down” command before you introduce the Remote Trainer for reinforcing “Down.” If your dog doesn’t already know the “Down” command, a procedure for teaching it is included in our Basic Training video.

To introduce the Remote Trainer for the “Down” command, combine the stimulus from the Remote Trainer with another form of correction the dog already understands; typically this will be a downward tug with your leash.

Use the intensity level you’ve pre-selected for your dog (see page 3). Use continuous stimulation for the initial lessons. If your dog is very sensitive, you may prefer to use a series of taps of momentary stimulation (see page 6).

For your initial training on “Down” with the Remote Trainer, go to a training area that is already familiar to your dog from having done other training there.

**Procedure for Introducing the Remote Trainer with the “Down” Command**

1. Have your dog on leash, and in a sitting position.
2. Command “Down” and press the button on the Remote Trainer.
3. At the same time, guide the dog down with your leash.
4. Release both the stimulation and the leash pressure the moment the dog lies down, and praise him.
5. If the dog gets up before you release him, press the button again as you command “Down.” Release the button when he lies back down, and praise him.
6. Release the dog and move to a new place in the training area and repeat steps 1 – 5.

7. End the session with some play time.
8. When you see the dog anticipating the “Down” command and lying down very quickly (he’s trying to “beat” the stimulation), he is ready to move on to distraction training. Generally you should see this behavior in your dog by the second session on “Down.”

### **Add Distraction Training**

Now that your dog understands how to “turn off” the Remote Trainer by lying down quickly on command, and how to keep it turned off by staying down, it is time to introduce distractions. Train “Down” in other training areas, and around gradually increasing levels of distraction. Having an assistant introduce mild distractions can be very helpful.

### **Procedure for Distraction Training with the “Down” Command**

1. Have the dog on a check cord, and give the “Down” command.
2. After the dog is lying down, introduce the mild distraction.
3. If the dog moves, correct with the Remote Trainer as you give the “Down” command.
4. Gradually increase the level of distractions.
5. When the dog responds reliably to the corrections, remove the check cord and use the Remote Trainer only.
6. Praise when your dog resists a temptation and stays lying down.

## **What If ...?**

### **Your dog won't lie down at all.**

Place the receiver on the back of the dog's neck, so that the stimulation "pressure" is downward. Lower the intensity by one level when placing the collar in this position.

Maybe your dog needs more training on "Down" using just the leash before using the Remote Trainer. Be sure to teach him how to respond to downward leash pressure by lying down, so that he can respond to it when the Remote Trainer is used simultaneously with it.

### **When working on distraction training, your dog ignores the stimulus, and doesn't seem to make any progress. Or he keeps "running through" the correction and visiting an enticing distraction.**

Use milder distractions until he becomes good at resisting them, and only then increase the distractions. Also, you can increase the level of intensity until you find a level that better gets his attention.

Remember that during your beginning distraction training on the "Down" command, you should have your check cord on the dog until it's clear that he understands how to respond to a Remote Trainer correction even when strongly tempted. The check cord keeps the dog from ignoring the Remote Trainer entirely, and getting rewarded by visiting an enticing distraction.

When the dog gets up in response to a distraction, remember to continue the stimulation until the dog lies back down. Stopping the stimulation tells him that his choice to lie down was the correct one. An effective Remote Trainer correction will teach him that moving after being told to "Down" is not what he wants to do.

## USING THE NO-STIMULATION SIGNAL TONE FOR TRAINING

Several models of Remote Trainers come with an independent no-stimulation signal tone. Check your Owner's Manual for the location of the signal tone button on the transmitter for your particular Remote Trainer. This feature has various possible uses.

### Two Ways the Signal Tone Can Be Used

1. As "praise" for the dog, signaling him at a distance that his decision or action was correct.
2. As a substitute for a verbal or whistle command.

Before you can use the tone, you must follow a conditioning process with your dog. The process will give the tone a certain meaning to the dog.

### Conditioning the Tone as Praise

1. First introduce it during play, and other things he enjoys. This step gets the dog used to the tone.
2. After he is used to the tone, watch for situations in training when he naturally feels successful. Press the tone button at these times, so that the dog associates the tone with his feelings of success.
3. Also watch for situations in which you could normally praise the dog during training. Use the tone a second or two before giving the verbal praise.
4. After the dog has made this association, you can use the tone during training to signal him when he is correct.
5. Avoid wiping out the praising power of the tone by following it shortly by a reprimand or correction. The tone should signal to the dog that he made a correct decision and can therefore relax.

## **Conditioning the Dog that the Tone Means the Same as a Command**

You can train your dog to understand that the tone means the same thing as a verbal or whistle command. It can be useful when verbal or whistle commands might not be heard because of distance. Also, you can use it when you don't want others around you to hear the command.

Here is a procedure to train the dog that the tone means the same as the "Come" command. You can substitute the command of your choice for "Come" so long as it is one that the dog already knows and can be reinforced with your Remote Trainer. Don't expect the dog to learn that the tone means many different commands. It is usually best to reserve it to mean just one command.

## **Conditioning the Dog that the Tone Means "Come"**

1. After the dog has been introduced to the Remote Trainer with the "Come" command (pages 22-24), begin pressing the tone button just before you give the command to come. For several sessions, do this every time you call the dog.
2. After several sessions, use only the tone to call the dog. If he does not respond right away, immediately reinforce a verbal "Come" command with a Remote Trainer. (You must release the tone button before activating stimulation.)
3. You can now use either the tone or your verbal command to "Come." They both mean the same thing to the dog.

## MORE TRAINING INFORMATION

We hope this training material has been helpful to you. The basic training information in this booklet is also presented in video form, in "Basic Training with the Tri-Tronics Electronic Collar." This video can be ordered by contacting your Tri-Tronics dealer, on-line on our web site at **tritrronics.com**, or by calling us at **1-800-456-4343**.

# T R I - T R O N I C S

## Notes

**Notes:**