

SUPER TRAINER™

EDT SERIES **Electronic Dog Trainer** **Owner's Manual**

- **EDT 100**
- **EDT 102**
- **EDT 200**
- **EDT 202**
- **EDT 300**
- **EDT 302**



D.T. SYSTEMS, INC.

Congratulations and Thank you for purchasing our **EDT Super Trainer™** training collar. The EDT series collars satisfy all your dog training needs. With up to a 1,200 yard range they are perfect for hunting, basic obedience and professional training. EDT series collars feature twenty levels of stimulation intensity, adjustable right from the handheld transmitter. Easy one hand operation allows for maximum control and safety. The EDT Series Dog Training Collar is durable, safe and, when used correctly, very humane. The automatic safety shut-off feature stops the stimulus from both the transmitter and the receiver to prevent accidental or prolonged stimulation.

IMPORTANT NOTE:

Please read this owners manual entirely before operating this unit. Should you have any questions about our collars or their operation please contact our Customer Service department. (See last page for address and phone number information).

TABLE OF CONTENTS

• Introduction	2
• Table of Contents.....	3
• Features.....	4
• Package Contents.....	4
• Individual Model Features.....	5
• Parts and Functions.....	7
• Adjusting and Positioning Your Collar for Proper Fit	11
• Batteries	12
• Testing	14
• Important Safety Notes	15
• Maintenance.....	16
• Warranty	17
• FCC Compliance	18
• Contact Information.....	16

FEATURES

Every **EDT Super Trainer™** Electronic Dog Training System Features:

- Digital Technology
- 1,200 Yard Range—(Over 2/3 mile)
- Lightweight, Compact Collars (6.7 oz.) and Transmitters (5.7 oz.)
- 20 Adjustable Intensity Levels (right from the Transmitter)
- Invisible, Embedded Collar Antenna
- Built in Safety Shut-off
- Rechargeable Ni-MH Battery System.
- Completely Waterproof Collars
- Water Resistant Transmitters

PACKAGE CONTENTS

- Transmitter
- Collar Receiver (Two for EDT 102, EDT 202, and EDT 302, one orange collar, one black collar)
- 2" Antenna for the Transmitter
- Rechargeable Batteries for both the Collar and Transmitter. (Only the Transmitter Battery is user replaceable)
- Battery Charger
- Double Jack Cable for Simultaneous Charging
- Test Light
- Owner's Manual
- Carrying Case

INDIVIDUAL MODEL FEATURES

EDT 100 and EDT 102

- The EDT 100 features the options of Momentary (Nick) Stimulation, and Constant Stimulation.
- The EDT 102 has the same features as the EDT 100 and comes with two Collar Receiver units which are operated from the same transmitter. One Collar Receiver is on a black collar and the other is on an orange collar. You change from one collar to the other by means of a small switch on the transmitter.

EDT 200 and EDT 202

- The EDT 200 features the options of Momentary (Nick) Stimulation, and Constant Stimulation, and Positive Vibration. The Constant Stimulation and Vibration features can be operated separately or simultaneously by use of the mode selector switch.
- The EDT 202 has the same features as the EDT 200 and comes with two Collar Receiver units which are operated from the same transmitter. One Collar Receiver is on a black collar and the other is on an orange collar. You change from one collar to the other by means of a small switch on the transmitter.

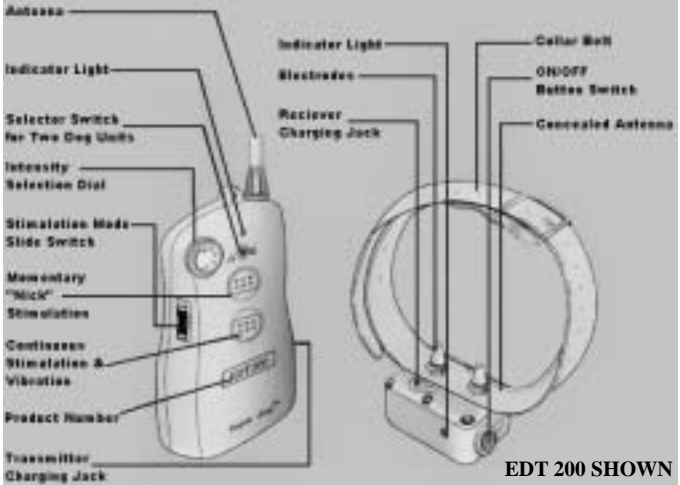
INDIVIDUAL MODEL FEATURES CONT.

EDT 300 and EDT 302

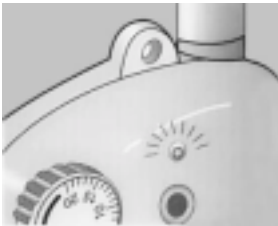
- The EDT 300 features the options of Constant Stimulation and Positive Vibration.
- The EDT 302 has the same features as the EDT 300 and comes with two Collar Receiver units which are operated from the same transmitter. One Collar Receiver is on a black collar and the other is on an orange collar. You change from one collar to the other by means of a small switch on the transmitter.
- The EDT 300 and 302 models are specially designed for those who are hesitant about using prolonged stimulation (greater than 2 second) stimulation on their dog. Bird hunters can use the vibration instead of electrical stimulation when their dog is in the water. This is also a great solution for hearing impaired dogs or for dogs requiring only mild correction.

EDT 100 & 102	Momentary (Nick) Constant Stimulation
EDT 200 & 202	Momentary (Nick) Constant Stimulation Positive Vibration
EDT 300 & 302	Constant Stimulation Positive Vibration

PARTS & FUNCTIONS



Transmitter Parts & Functions



Transmitter Indicator Light

When one of the push button switches on the transmitter are pushed, the RED light will turn on to indicate that the transmitter is being operated. When the battery needs charging the RED light will blink once every 1/2 second.



Two-Dog Model Selection Switch (EDT 102, 202 & 302)

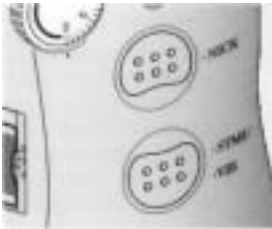
The two-dog models have a toggle switch to select control for either collar.

PARTS & FUNCTIONS CONT.



Intensity Selection Dial

The intensity selection dial allows you to choose between twenty different levels of stimulation, allowing for very precise control.



Stimulation Activation Push Buttons

Pressing the upper button causes the collar to administer a Momentary Stimulation or “Nick”. The lower button controls the Constant Stimulation and Vibration Features. Which one is activated

depends on your collars specific features and, in the case of the EDT 200 and 202, where the Stimulation Mode Slide Selector is set.



Stimulation Mode Slide Selector (EDT 200 and 202)

S - Constant Stimulation only
SV - Constant Stimulation
and Vibration Simultaneously
V - Vibration only

PARTS & FUNCTIONS CONT.



Transmitter Antenna

Be very careful when screwing the 2" antenna into the transmitter. Hand tighten only. Over tightening could cause damage to the antenna or the antenna mount.

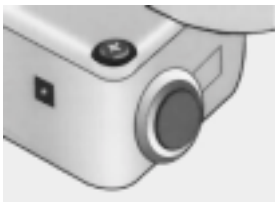


Battery Charging Jack - Transmitter

The battery charging jack is located on the side of the transmitter. After charging is complete always close the jack

with the rubber plug to prevent foreign particles from getting inside the unit.

Collar Receiver Parts & Functions



ON/OFF Button

The Collar Receiver is activated by pressing the ON/OFF button. Hold the button for at least one second to activate or deactivate the unit.

PARTS & FUNCTIONS CONT.

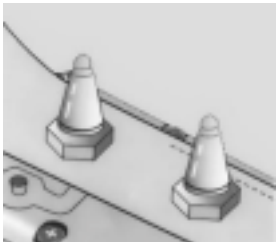


Indicator Light

When the ON/OFF button on the Collar Receiver is pushed, the RED light will flash steadily once every two seconds to indicate that the unit is active.

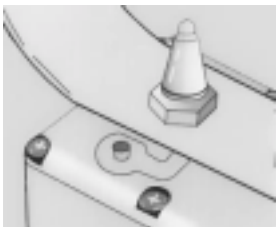
The RED light changes to a rapid flash (twice per second) when the

battery is low and in need of charging.



Electrodes

Electrodes should fit snugly on the dog's neck to ensure good contact with the skin. For more information on the proper fit of the collar see page .



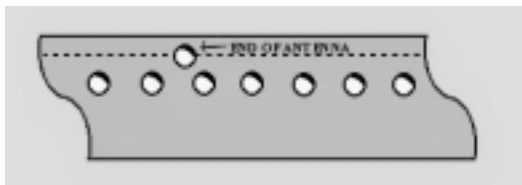
Battery Charging

Jack - Collar

The battery charging jack on the collar receiver is located next to the collar and is covered by a rubber plug. After charging is complete always close the jack with the

rubber plug to prevent foreign particles from getting inside the unit.

PARTS & FUNCTIONS CONT.



Collar Belt with Imbedded Receiver Antenna

The imbedded collar antenna ends at the displaced hole midway along the belt.

CAUTION

Do not cut the collar belt. Doing so will damage the antenna and may result in severely decreased receiver range.

ADJUSTING & POSITIONING YOUR COLLAR FOR PROPER FIT

Proper collar tightness and position are very important to insure safety and correct functioning every time you use the collar.



ADJUSTING & POSITIONING YOUR COLLAR FOR PROPER FIT CONT.

- All electronic collars need to be very snug to work properly. They must be just tight enough to allow the “prongs” or electrodes to make good skin contact.
- If your collar is too loose, the stimulation may not work properly because good skin contact is not being achieved. This can directly affect the stimulation performance and whether or not the dog will receive the stimulation. Always check for good “prong” contact if it appears that your dog is not responding to the stimulation.
- A loose collar can promote skin irritation from moving or rubbing too much on a dog’s neck while they are running or training. The proper snug fit will help prevent this from occurring.
- Proper fit of the collar is important. It should be just tight enough on the dog’s neck to make good skin contact and allow the dog to breath normally. The collar should never be so tight on the dog’s neck that it restricts the dog’s normal breathing pattern.
- For proper positioning of your collar receiver box, it should be placed on the center of the dog’s neck..

BATTERIES

All **EDT Super Trainer™** training collars are equipped with rechargeable Nickel Metal Hydride (NiMH) batteries. NiMH batteries are not memory sensitive and do not require depletion before recharging.

BATTERIES CONT.

The batteries come partially charged from the factory. It is, however, recommended that you give the battery a full charge before the first use. This takes about 14 hours.

Remember - Always keep batteries away from flammable substances (especially when charging).

When storing the unit for long periods remember to regularly give the batteries a full charge (14 hours). This should be done once every 4 to 6 weeks.



Battery Charging Procedure

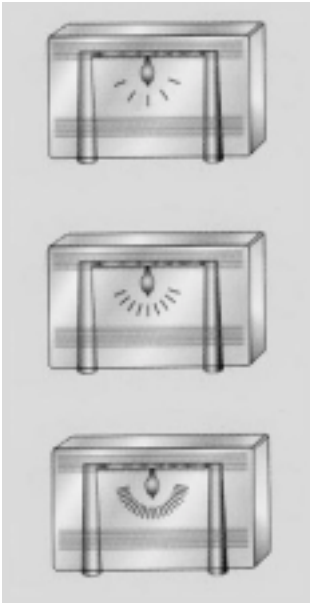
1. Turn off the power on the receiver.
2. Plug the charger into a 110 Volt outlet. (A 220 Volt European charger is available from D.T. Systems)
3. Charge both batteries (transmitter and receiver) for 14 hours. This can be done separately or simultaneously.
4. After charging, disconnect the battery charging cables from the receptacles and securely replace the rubber battery receptacle covers on both the transmitter and the receiver.
5. Test the unit to make sure that it is working properly.

TESTING

There are three methods you can use to test your **EDT Super Trainer™**.

First, you should make sure that both units are fully charged. Then turn on the power to the collar receiver. Next, follow one of these three steps:

To Test the Electronic Stimulation:



- A) Place the tester firmly on the electrodes of the collar receiver.
- B) Set the intensity dial and the stimulation mode slide selector switch to “S”.
(Note - An intensity level setting of 7 or less might not be enough to light the tester).
- C) Push either the Nick or Stimu/Vib button.
- D) The tester light will quickly flash for the Nick function and light steadily when the Stimulation button is pushed. (The higher the intensity, the brighter the test light).

TESTING CONT.

To Test the Vibration (with the Tester):

- A) Follow the directions on page 14, but set the stimulation mode slide selector to “V” or “SV”.
- B) The unit should vibrate and the tester should light.

To Test the Vibration (without the Tester):

- A) Follow the directions above.
- B) The unit should vibrate.

IMPORTANT SAFETY NOTES

- Before beginning training your dog should be examined by a veterinarian to assure that there are no physical reasons for your dog’s excessive barking and to assure that your dog is in good health.
- Since no electronic device is perfect, there is an extremely slim possibility that your dog may receive an unintentional electric stimulation. Therefore never leave the unit on your dog while unsupervised.
- Your **EDT Super Trainer™** is a very valuable tool if used correctly. Therefore it is extremely important that you completely understand all functions of the collar and how to properly train with it before placing it on your dog.

IMPORTANT SAFETY NOTES CONT.

- The electrodes on this collar are made with high grade stainless steel to help prevent any chemical or allergic reactions with your dog's skin.
- To prevent neck irritation, the collar should never be worn for more than 12 hours a day. Daily changing the collar location on the dog's neck will also help prevent irritations. It is important to keep the collar clean. Clean the electrodes regularly with a mild anti-bacterial soap.
- If an irritation is found, carefully wash the dog's neck with soap and water and then wipe the area with Hydrogen peroxide. Dry thoroughly and apply an antibiotic ointment.

MAINTENANCE

- It is very important to periodically clean your **EDT Super Trainer™** for maximum performance. Regular cleaning will also lengthen the life of your unit.
- Clean the **EDT Super Trainer™** collar box with lukewarm water and a mild anti-bacterial soap.
- Take care to thoroughly clean the space between the electrodes and the belt.
- The belt and buckle should be cleaned with water and a mild soap then allowed to dry completely.
- Always allow the entire unit to completely dry before using.

WARRANTY

D.T. Systems Premium Lifetime Warranty is the best warranty offered in the industry. This warranty is free to participating U.S. customers. (The warranty registration card must be returned within 30 days of original purchase). This changes our normal one year parts and labor warranty to a lifetime warranty against manufacturing defects on parts and a one year warranty on labor.

What is covered:

D.T. Systems Premium Lifetime Warranty covers all parts to be free from manufacturing defects for as long as the unit is held by the original owner.

What is not covered:

- Batteries are not part of our lifetime warranty. Rechargeable batteries are warranted against defects for one year from the original purchase date.
- Our warranty does not cover parts that malfunction due to abuse, misuse, improper maintenance, or incorrect handling.
- Damage from dogs chewing or wear and tear from excessive field use is not covered.
- Our warranty does not cover the cost of shipping the unit to our repair center. Return ground shipping (inside the continental United States) to the customer is covered. However, next day or second day air shipping is not covered and if requested will be charged.

WARRANTY

How the Limited Lifetime Warranty works:

- To qualify for the Warranty you must fill out the warranty registration card which came with your system and mail it (with your original sales receipt) to D.T. Systems within 30 days of purchase.
- There is no charge for parts or labor for the first year on any of our lifetime warranted products.
- When the product's labor warranty expires after the first year, there will be a normal labor charge for any repair under the lifetime warranty program should your system be in need of service. Labor charges will range from \$35 to \$110 depending on:
1) the system model, and 2) the severity of the repair needed.
- Any defective manufactured part or parts that need replacement will be free during the lifetime warranty period.

FCC COMPLIANCE

Your **EDT Super Trainer™** has been manufactured under complete compliance with the Federal Communication Commission (FCC). The complex internal structure of each product has been designed to operate within specific regulations of FCC specifications. Any unauthorized modifications to your product is a violation of these specifications.

The **EDT Super Trainer™** has been made with State of the Art equipment. Any fine adjustment should be performed only by D.T. Systems' technicians.



D.T. Systems, Inc.

2872 Walnut Hill Lane

Dallas, Texas 75229

Tel: (214) 350-9446, (888) LUV-U-DOG

Fax: (214) 350-7847

Website: <http://www.dtsystems.com>

E-mail: customerservice@dtsystems.com